

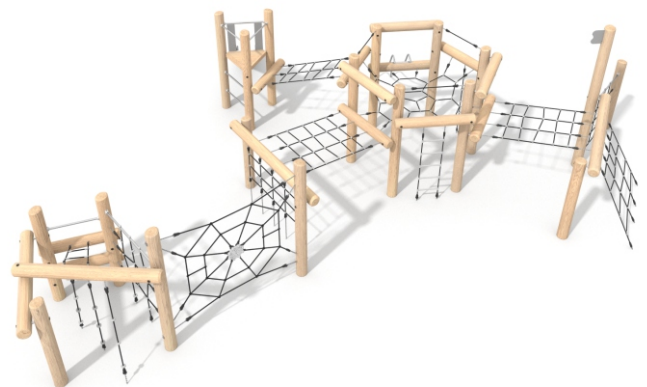


Information about the product

Dimensions	ca. 1173 x 949 cm
Safety zone	ca. 1490 x 1299 cm
Safety zone area	ca. 112 m ²
Overall height	ca. 329 cm
Free fall height	ca. 229 cm
Amount of users	42
Product complies with EN 1176-1:2017-12	Yes
Availability of spare parts	Yes
Age range	3-12

According to EN 1176-1:2017-12 norm, the product requires applying a safety surface according to the product's free fall height.

Functions



Climbing

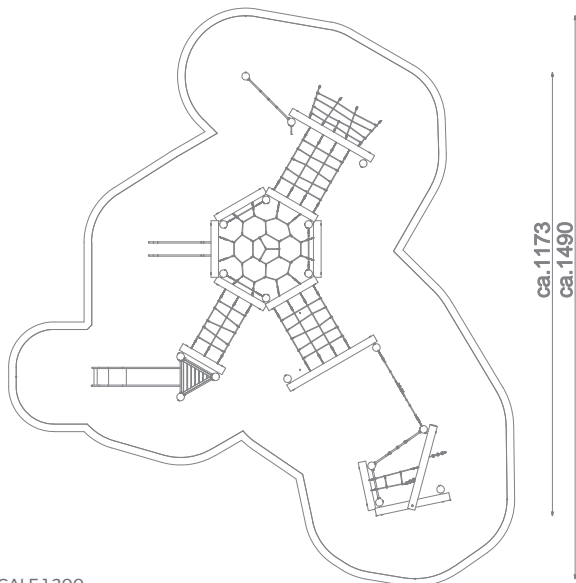
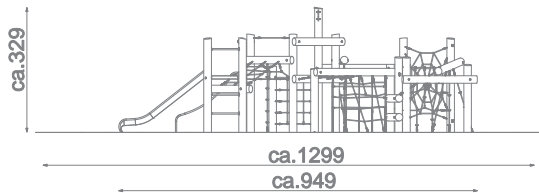


Balancing

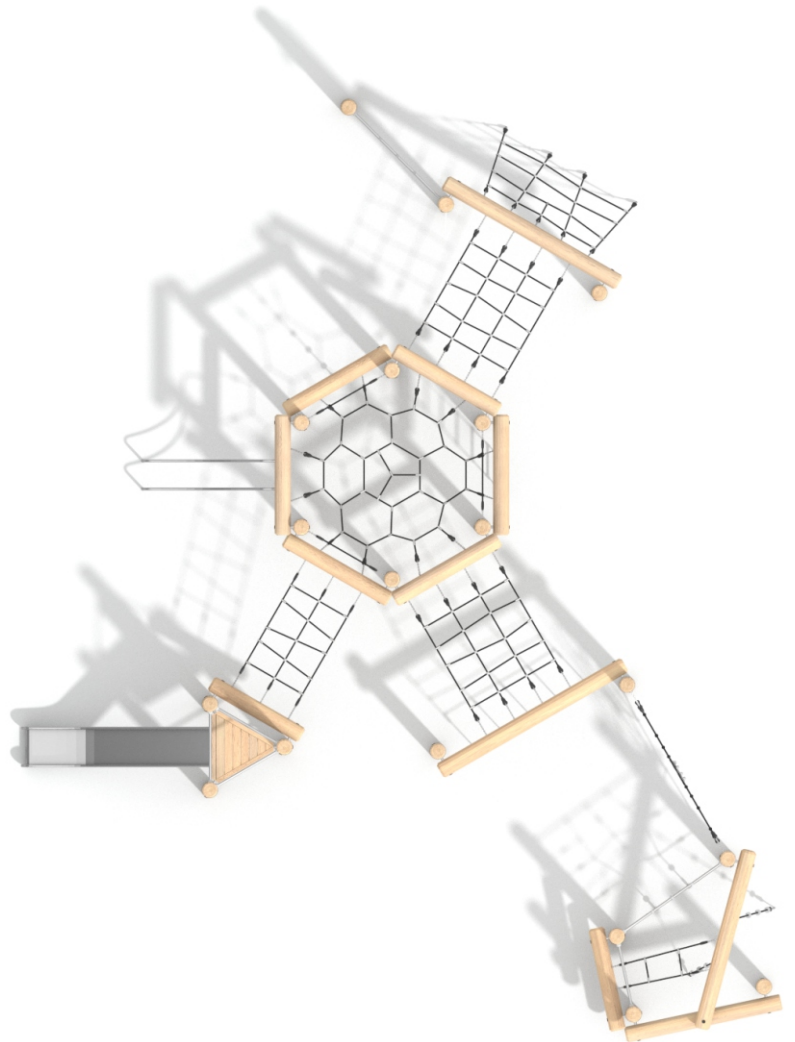


Socializing





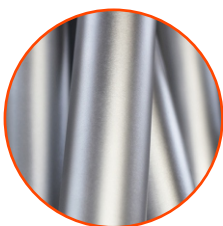
SCALE 1:200



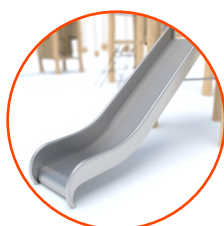
Materials



Natural robinia wood



Elements construction
made of stainless steel
AISI 304



Slides made of stainless
steel AISI 304



Polypropylene ropes
pp - multisplit type with a
steel core and a diameter of
16 mm

